

chicago
shakespeare theater
on navy pier

Islander

a new musical



MAJOR SEASON SUPPORTERS



Illinois
Department of Commerce
& Economic Opportunity

The Jentes
Family

Ray and Judy
McCaskey

ROBERT R.
MCCORMICK
FOUNDATION

Mark Ouweleen
and Sarah Harding

Pritzker
Foundation

Burton X. and
Sheli Z. Rosenberg

THE SHUBERT
FOUNDATION INC.

Carl and
Marilynn Thoma



Thank you for joining us for our WorldStage series presentation of *Islander*! We are delighted to welcome this company from Scotland and introduce them to Chicago audiences. We hope you enjoy this dynamic, powerful performance.

Chicago Shakespeare Theater has long been dedicated to importing the world's most thrilling theatrical events to our city, featuring more than 1,300 artists from 22 countries to date. The exchange of ideas, artistic aesthetics, and understanding brings us closer together and creates a broader perspective. We look forward to continuing to find exceptional work from around the globe and sharing it with our community in the years to come.

We are committed to engaging the highest caliber of artists and creating outstanding work on our stages. As we continue to settle into our new roles, we're excited to hear what you love most about Chicago Shakespeare Theater and your hopes for our shared future.

Sincerely,

Edward Hall
Artistic Director
Carl and Marilyn Thoma Chair

Kimberly Motes
Executive Director

Islander

MUSICAL NUMBERS

The Splitting of the Island
There Is a Whale
Video Call
Spikkin
There Is a Girl
Same But Different
Finfolk Song
Blessing
Have You Seen...?/
Spikkin (Reprise)
Answerphone
Sorry for Your Loss
There Is a (Baby) Girl/
Spikkin (Reprise II)
New Horizons

CHARACTERS

TWO NARRATORS

AN AMATEUR DJ

EILIDH ("AY-lee") Age 15, Kinnan's youngest inhabitant

ARNA A whale calf

EILIDH'S MUM Once a teacher on Kinnan, now a nanny on the Mainland

JENNY A marine biologist from the Mainland

EILIDH'S GRAN Kinnan's oldest inhabitant

BREAGHA ("BRAY-uh") Unemployed, 41 weeks pregnant

MORE KINNANFOLK Jonko (the ferryman), Paul, Steve, Ivan, Jean, Flora, Annie, Bill, Bob, Peg, Andy, Kit, Maggie, Sue, Ronnie, Olivia, Finjy, Hilda, Blair, Mr. Sillars, Rosie

ARRAN Age 16, an apprentice whale keeper from Setasea

A WHALE COW Matriarch of Setasea's whale pod; Arna's mother

in partnership with
**SETASEA LLC, HELEN MILNE PRODUCTIONS, THEATRE ROYAL PLYMOUTH,
AND DUNDEE REP THEATRE**
present

Islander

a new musical

Conceived & Originally Directed by **AMY DRAPER**

Staging & Associate Direction by **EVE NICOL**

Book by
STEWART MELTON

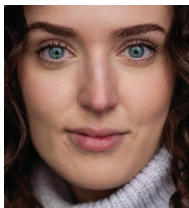
Music & Lyrics by
FINN ANDERSON

Starring



LOIS CRAIG
Eilidh

NOV 29, DEC 1, 3, 6, 7, 9, 12, 15 & 17



JULIA MURRAY
Arran



STEPHANIE MACGARAIDH
Arran

NOV 30, DEC 2, 5, 8, 10, 13, 14 & 16



SYLVIE STENSON
Eilidh

Scenic Designer
EMMA BAILEY

Costume Designer
HAHNJI JANG

Sound Designer
SAM KUSNETZ

Lighting Designer
SIMON WILKINSON

Music Director & Loop
Station Sound Designer
FINN ANDERSON

Associate Music Director
DIANA LAWRENCE

Casting
KATHERINE SKENE

Production Stage Manager
JASMIN DAVIES

US Tour Production Manager
DUNCAN BECKER

US Tour General Management
MARTIN PLATT,
PERRY STREET THEATRICALS

DOREEN SAYEGH & ANNIE SHEA GRANEY,
PEMBERLEY PRODUCTIONS

Setasea LLC is Molly Morris, James L. Simon, Martin Platt for Pemberley Perry/PW Productions, Helen Milne, Rosemary and Kenneth Willman, Kevin Ryan and Diane Scott Carter, Dawn Smalberg and Bev Ragovoy, Heni Koenigsberg and Lauren Koenig-Plonskier, Alan Shorr, Neil Gooding Productions, Maya Leibman and Robert Gross, Ira Gaines, Pump Priming Productions, WheelerMorrissey/Jodi Kaplan

Originally produced by Helen Milne productions in association with Mull Theatre
and the generous support of Creative Scotland

Special Thanks to Kirsty Findlay, Bethany Tennick, Janet Mueller, Jerry Magnoni, Y NOT Productions, Wendy Gillespie, Steven Gans, Braden Abraham, and Dre Robinson. Sweater built by Sandra Bean. Shetland Heather yarn provided by Aran. Knit, grown, and spun on the Shetland Highlands.

The performance will run 90 minutes with no intermission.

Welcome. If we can help accommodate you during your visit, please speak with our House Manager. Please note that haze and flashing lights will be used in this performance. For your safety, we ask that you keep aisles and doorways clear. Please silence your electronic devices and refrain from taking any photography and other video or audio recordings of the production.

LOIS CRAIG (*Elidh*) Craig is a 2022 musical theater graduate from Mountview Academy of Theatre Arts in London. She is originally from Fife in Scotland. Theatre Credits include: Julie Jordan in *Carousel* (Mountview), Ensemble in *Les Miserables* (Mountview), Toni Tinsel in *Santa's Little Astronaut* (Macrobert Arts Centre). She has also been a professional voiceover actor for almost 10 years. Credits include: Everest in *Paw Patrol* (Nickelodeon), Gail Whale, Hank's Step Mum and Anya in *Baby Shark* (Nickelodeon), Frida in *Barracuda Queens* (Netflix). Craig would like to dedicate her performance to the memory of her Dad. She feels him with her during every step of her journey with *Islander*.

STEPHANIE MacGARAIDH (*Arran*) Training: Guildford School of Acting. Theater credits include: Mistress Ford & Others/Musician in *Merry Wives of Windsor*, Swing in *A Mother's Song*, Billie Bones/Captain Smollett/Musician/Puppeteer in *Treasure Island*. Other credits include: First Witch and others in *Macbeth* (award-winning audio drama, Almost Tangible), OneVoice 'Best Narrator' Nominee.

JULIA MURRAY (*Arran*) Murray trained at the Royal Conservatoire of Scotland and was the BA Musical Theatre Programme Prize Recipient 2020. Recent theater credits include: *Sleeping Beauty* (Ayr Gaiety), *Impromptu* (Play Pie Pint), *Underwood Lane* (Tron Theatre), *Thread* (Kick the Door), *Robin Hood* (Cumbernauld Theatre), rehearsed readings with The Tron (*The Grain Store*) and Traverse Theatre (*Cow & Pig*), and *City of Angels*, *The Baker's Wife*, *Assasins*, *Pippin*, *Don't Wait Too Long*, *Please, Bon Appetit* (Royal Conservatoire of Scotland). Murray is a multi-instrumentalist and has been a soloist with the Royal Scottish National Orchestra.

SYLVIE STENSON (*Elidh*) Stenson is a Scottish-Caribbean actor from Glasgow. She trained at the Royal Conservatoire of Scotland in musical theater. Since graduating this year, Stenson has taken part in her first Edinburgh Fringe show *Soon the Musical* with Eclipse Theatre. Now, Stenson is excited to take part in the *Islander* tour.

AMY DRAPER (*Concept & Original Direction*) Draper is based in Somerset, UK. She has directed projects at venues ranging from community halls to the Royal Shakespeare Company. Her passion is creating musical theater. Recent shows include *Islander* (Off-Broadway, Southwark Playhouse, Summerhall, Scotland tour, Radio 4 and Dundee Rep film), *Day of the Living* (RSC) and *These Trees are Made of Blood* (Southwark Playhouse, Arcola).

EVE NICOL (*Staging & Associate Director*) Nicol is a Glaswegian director and playwright. Credits as Director include: *Svengali* (Pleasance/Pitlochry Festival Theatre), *I Can Go Anywhere* (Traverse), *The Drift* (National Theatre of Scotland). Credits as Writer include: *If You're Feeling Sinister* (BBC Arts/Avalon), *One Life Stand* (Middle Child). Credits as Associate Director include: *What Girls Are Made Of* (Raw Material/Traverse).

STEWART MELTON (*Book*) Melton is a writer and dramaturg from Aberdeen, Scotland. His scripts include *Seesaw* for Unicorn Theatre, digital play *Distance Remaining*, audio drama *Time Lapse* and *Two Endless Minutes* for Young Vic. His dramaturgical work includes

projects for the Royal Shakespeare Company, Bristol Old Vic, and Hull Truck.

FINN ANDERSON (*Music & Lyrics, Music Director & Loop Station Sound Designer*) Anderson is a Scottish writer and songwriter whose work has been performed across the world. He has co-created four award-nominated musicals, tackling diverse subject matter and wide-ranging styles of music. His solo albums, and cast recordings of *Islander* and *A Mother's Song* are available on all major online music stores and streaming sites.

EMMA BAILEY (*Scenic Designer*) Bailey, a Bartlett School of Architecture UCL and Motley Theatre Design Course graduate, won the prestigious Linbury Prize for Stage Design in 2011 for *Roy Orbison in Clingfilm*. Nominated at the Drama Desk Awards for Best Scenic Design for *Six the Musical*, Bailey's designs have graced global stages like the Lena Horne Theatre on Broadway, Vaudeville Theatre West End, Glastonbury, and Sydney Opera House. She is actively involved in theater workshops and is a member of the architects' association STORE.

HAHNJI JANG (*Costume Designer*) Jang is an activist stylist and costume designer using their passion for the fiber arts to upcycle garments and offer affordable affirming styling outside the limiting size and gender binaries of capitalism. Credits include: *Hurricane Diane* (The Huntington), *BLUSH* (Soho Rep), *Here We Are, The Most Spectacularly Lamentable Trial of Miz Martha Washington* (Theatre for One, HVSF), *Missing Them* (The City, The Working Theatre), *A Midsummer Night's Dream* (The Public Theater Mobile Unit), *Sister Mok-rah*n (Princeton University). Hahnji.com (they/them/ 향)

SIMON WILKINSON (*Lighting Designer*) Wilkinson works internationally as a lighting designer for theater, dance, and opera. Highlights include the world premiere of *Disney's Bedknobs and Broomsticks* (UK & Ireland), *Islander* (New York / London / Edinburgh), *Vanishing Point's Metamorphosis* (Scotland / Italy), *Vox Motus's Flight* (worldwide) and Robert Lepage's production of *The Magic Flute* (Quebec City). Over the years, his lighting has created a Guinness World Record, brought thousands of people to a windswept forest, and caused reports of an alien invasion.

SAM KUSNETZ (*Sound Designer*) Kusnetz is a sound and projection designer who works in New York City and around the world. Favorite designs include *Assassins* at Classic Stage Company, the world premiere of *When We're Gone* at Lyric Theatre of Oklahoma, and *Islander*, of course! Kusnetz is a proud member of United Scenic Artists and the founder of Team Sound, a creator of theatrical tools.

DIANA LAWRENCE (*Associate Music Director*) Lawrence has worked as a music director and pianist at The Public Theater, The Second City, and the Broadway musical *Once Upon a One More Time*. Her original musical, *Mill Girls*, recently released an EP featuring Nikki Renée Daniels, Alysya Deslorieux, and Val Vigoda. Lawrence sings in the cross-genre vocal trio, Artemisia.

JASMIN DAVIES (*Production Stage Manager*) Davies is a London based Stage Manager often found working on musical theater across the UK,

most recently on *Matilda* (West End). She is on the UK Equity Stage Management Committee. She joined the *Islander* team in 2019 and is very excited to return to the isle of Kinnan!

DREW DONNELLY (*AEA Stage Manager*)
CHICAGO SHAKESPEARE: *Disney's Beauty and the Beast*. CHICAGO: *Cabaret* (Porchlight Music Theatre); *Sweeney Todd* (Kokandy Productions); *The DragSeed, Snowgirls, Satan's School for Girls, Bewildered* (Hell in a Handbag Productions); *Gentle, The Edge of Our Bodies* (TUTA Theatre); *Triassic Park, 35MM* (Circle Theatre); *Always Saturday, Beth In July* (Prop Thtr); *The Glass Menagerie, Superior Donuts* (Mary-Arrchie Theatre Co.)

DUNCAN BECKER (*US Tour Production Manager*) Becker is the Technical Director at Loyola University in New Orleans. Some favorite projects include *Craig's Listed* (the NOLA Project), *General Store* (Creede Repertory Theatre), and *Detroit* (Southern Rep Theatre). He previously served as Stage Manager for the Leon Bridges *Good Thing* world tour.

SCOTT MONNIN (*US Tour Associate Lighting Designer*) Monnin is a lighting designer based in Brooklyn from Granville, Ohio. They are about to start graduate school at University of Maryland for lighting design and are excited to be a part of this modern folktale before that starts. Previous 2022 Lighting Design Credits include: *Mame* at Quincy Community theater in Illinois, a first staging of a new work *Doubt that the Stars are Fire*, and *Wit* with the Seeing Place Theatre. More of their work can be found at scottmonnin.com.

JACOB LEVITIN (*US Tour Audio Engineer*) Levitin has been living and breathing sound and music for as long as he can remember. Selected credits include *Jersey Boys, An American In Paris* (Cape Playhouse), *Islander, Fiddler on the Roof* in Yiddish, *Dog Man, the Musical* (Off-Broadway), *Buddy Holly Story* (National tour), and Broadway and touring shows as a music technology specialist with Midiomatic LLC and KeyboardTEK. Levitin is very excited to be back on Kinnan! Some of his original music and visual work can be found on Instagram @electricdaisy_studio.

SHILPA T-HYLAND (*UK Associate Director*) T-Hyland trained at the Royal Conservatoire of Scotland. Credits include: *Wickies* (Paul Morrissey, Chris Wheeler, Molly Morris), *Revolution Days* (Bijli), *We'll Meet in Moscow* (Traverse Theatre), *Roxana* (Paisley Book Festival). Associate Directing: *Burn* (National Theatre Scotland), *Still* (Traverse Theatre), *Pride and Prejudice** (*Sort Of) (Lyceum Theatre etc.), and *306: Dusk* (NTS).

MOLLY MORRIS (*Producer, Setasea*) *Come From Away* (Broadway, West End, North America), *Diana* (Broadway), *Kathy & Stella Solve a Murder* (UK). Morris is co-founder of Ghost Light Global, Entertaining Adventures. ghostlightglobal.com

JAMES SIMON (*Producer, Setasea*) Tony, Drama Desk, and Off-Broadway Circle Critic award nominee. Shows include *Bells Are Ringing, The Woman in Black, Pippin, The Velocity of Autumn, and Damn Yankees* (London with Jerry Lewis). Off-West End, he produced the critically acclaimed

The Marriage of Alice B Toklas at Jermyn Street Theater, 2022.

MARTIN PLATT *for Pemberley Perry/PW Productions (Producer, Setasea)* Platt is a Tony Award-winning producer, director, and general manager. BROADWAY: *Dames at Sea, Vanya and Sonia and Masha and Spike*. WEST END: *Gumboots, Nixons Nixon, and Lend Me a Tenor The Musical*. He is a partner in Perry Street Theatricals (New York).

HELEN MILNE PRODUCTIONS (Producer)
Helen Milne is an alum of the Stage One Producer Scheme and a recipient of the Ian McKellen Producing Grant 2022. Credits include *At the Illusionist's Table* (conceived, co-created and co-produced for Edinburgh Fringe 2013-2017), *Islander—A Filmed Reimagining* (co-produced with Dundee Rep and Eden Court) and Roald Dahl's *The Wonderful Story of Henry Sugar* co-produced with The Roald Dahl Story Company.

THEATRE ROYAL PLYMOUTH (Producer)
Theatre Royal Plymouth is a registered charity providing art, education, and community engagement throughout Plymouth and the wider region, engaging and inspiring many communities through performing arts and aiming to touch the lives and interests of people from all backgrounds.

DUNDEE REP THEATRE (Producer) Dundee Rep Theatre sits at the cultural heart of Dundee as a centre of creative excellence, establishing a reputation as one of the UK's leaders in theater production, carrying the Dundee brand far and wide. Creating and delivering work for local, national, and international audiences, Dundee Rep Theatre has been instrumental in creating a number of award-winning and award-nominated productions.

PEMBERLEY PRODUCTIONS (US Tour Managers)
Pemberley Productions is Doreen Sayegh, Tim Smith, and Annie Shea Graney. They collaborate with overseas companies and US-based productions to book and manage tours across North America as well as internationally. Pemberley was last at Chicago Shakespeare with *Wuthering Heights*. pemberleyproductions.com

For more information about touring, please contact Doreen Sayegh at doreen@pemberleyproductions.com.

ISLANDER PRODUCTION TEAM

SCOTT MONNIN
US Tour Associate
Lighting Designer

JACOB LEVITIN
US Tour Audio
Engineer

DREW DONNELLY*
AEA Stage Manager

ANSHUMAN BHATIA
US Tour Production
Consultant

SHILPA T-HYLAND
UK Associate
Director

JAMES GARDNER
Set Electrics

TOM MULLINER
LX Programmer

*denotes a member of Actors' Equity Association



Actors' Equity Association (AEA), founded in 1913, represents more than 45,000 actors and stage managers in the United States. Equity seeks to advance, promote and foster the art of live theatre as an essential component of our society. Equity negotiates wages and working conditions, providing a wide range of benefits, including health and pension plans. AEA is a member of the AFL-CIO, and is affiliated with FIA, an international organization of performing arts unions. The Equity emblem is our mark of excellence. www.actorsequity.org

Regional Tony Award-recipient Chicago Shakespeare Theater produces a bold and innovative year-round season—plays, musicals, world premieres, family productions, and theatrical presentations from around the globe—alongside nationally recognized education programming for students, teachers, and lifelong learners, and engagement with communities and artists across the city. Founded in 1986, the Theater’s onstage work has expanded to present as many as twenty productions and 650 performances annually. The Theater is dedicated to welcoming the next generation of theatergoers; one in four of its audience members is under the age of eighteen. As a nonprofit organization, the Theater works to embrace diversity, prioritize inclusion, provide equitable opportunities, and offer an accessible experience for all. On the Theater’s three stages at its home on Navy Pier, in classrooms and neighborhoods across the city, and in venues around the world, Chicago Shakespeare is a multifaceted cultural hub—inviting audiences, artists, and community members to share powerful stories that connect and inspire.

ARTISTIC, EXECUTIVE & PRODUCING

PAIGE WHITSON-MARTINI
Director of Producing

DANIEL J. HESS
Producer, Artistic Engagement and Experience

BOB MASON
Artistic Associate/
Casting Director

AILINN FRANTZ
Associate Producer

ALEXIS TAYLOR
Casting and Producing Associate

TYLER MEREDITH
Interim Executive Assistant

KARINA PATEL
Assistant to the Creative Producer

DELANEY PIGGINS
Arts Leadership Fellow

EDUCATION

NORA CARROLL
Interim Director of Education

GRACE GRINDELL
Learning Programs Associate

MERSEDEZ HOOVER
Education Programs Associate

MARKETING, COMMUNICATIONS, BOX OFFICE & GUEST SERVICES

JULIE STANTON
Director of Marketing and Sales

HANNAH KENNEDY
Director of Communications

LATANYA HODGES
Digital Marketing Manager

EMMA PERRIN
Public Relations and Digital Media Manager

OLIVIA GEORGE
Graphic Designer

MIKAYLA SHAW
Marketing Assistant

SCOTT LETSCHER
Ticketing Services Manager

SONJA PARDEE
Box Office Supervisor

DEVIN FAUGHT
Front of House Manager

PHOEBE SILVA
Assistant House Manager

NATALIE BRANDY JAZ FOWLKES
MICAH HAZEL
AURTHUR KING
ASH PIERCE
Box Office Associates

EMILY ARTHUR
DANI BROWN
MEGHAN CAMERON
SAM CASTILLO
GRACE CUMMINGS
LEAH JOHNSON
OLIVIA LESLIE
PHILIP MACALUSO
JESSICA PLUMMER
JULIA RAVENSCROFT
BECKY WILSON
ERIKA WILSON
JADA WOODARD
Guest Services Associates

TANNER McCORMICK
Lead Concessioner

SUZIE GLOVER
CHAMAYA MOODY
JACK SAUNDERS
Concessioners

DEVELOPMENT & SPECIAL EVENTS

EMILY HANSEN
Director of Development

MAKEDA COHRAN
Events Director

CARLOS GARCÍA LEÓN
Individual Giving Manager

FINLEY JONES
Development Coordinator

NATHAN WETTER
Donor Services and Data Coordinator

FINANCE & HUMAN RESOURCES

KATIE TRESNOWSKI
Director of Finance and Administration

DAN THOMAS
Controller

ALYSSE HUNTER
Assistant Controller

GIANNA SCHUETZ
Company Manager and Human Resources Specialist

ALEJANDRA SUJO
Accounting Associate

AMAL MAZEN SALEM
People Operations Assistant

PRODUCTION

MAC VAUGHEY
Director of Production

ALEXA BERKOWITZ
Assistant Director of Production

SCENERY

TYLER METOXEN
Technical Director

TOBI OSIBODU
Stage Crew Head

BRADLEY BURI
Stage Crew Carpenter Head

JACK BIRDWELL
Stage Rigging Crew Head

BOBBY NOE
CHRISTOPHER CULVER
House Technicians

COSTUMES

RYAN MAGNUSON
Costume Department Manager

CATHY TANTILLO
Costume Design Assistant

ASH BERG
Draper/Workroom Supervisor

JENN GIANGOLA
Wardrobe Supervisor

TEAGAN ANDERSON
First Hand

YAS MAPLE
Stitcher

LIGHTING AND VIDEO

ALEC THORNE
Lighting and Video Department Manager

ARIANNA BROWN
Assistant Lighting and Video Department Manager

JOAN E. CLAUSSEN
Lighting Crew Head

SOUND

NICHOLAS POPE
Sound Department Manager

DAN SCHRECK
Sound Crew Head

HAIR AND MAKE-UP

ASHLEY ADAMS
Hair and Make-up Department Manager

PROPERTIES

ANNA KATHARINE MANTZ
Properties Department Manager

ANNAMAE DURHAM
Assistant Properties Department Manager

DAN NURCZYK
Properties Crew Head

FACILITIES & TECHNOLOGY

MARK KOZY
Operations Director

JEANNE DEVORE
Technology Manager

KEVIN SPELLMAN
Technology and Innovation Specialist

DANIEL LOPEZ
Facilities Manager

FELIX ROSS
Custodial Manager

DWAYNE BREWER
ANTHONY DAVIS
FERRIS ROBERTSON
DELORISTINE WASHINGTON
Custodial Assistants